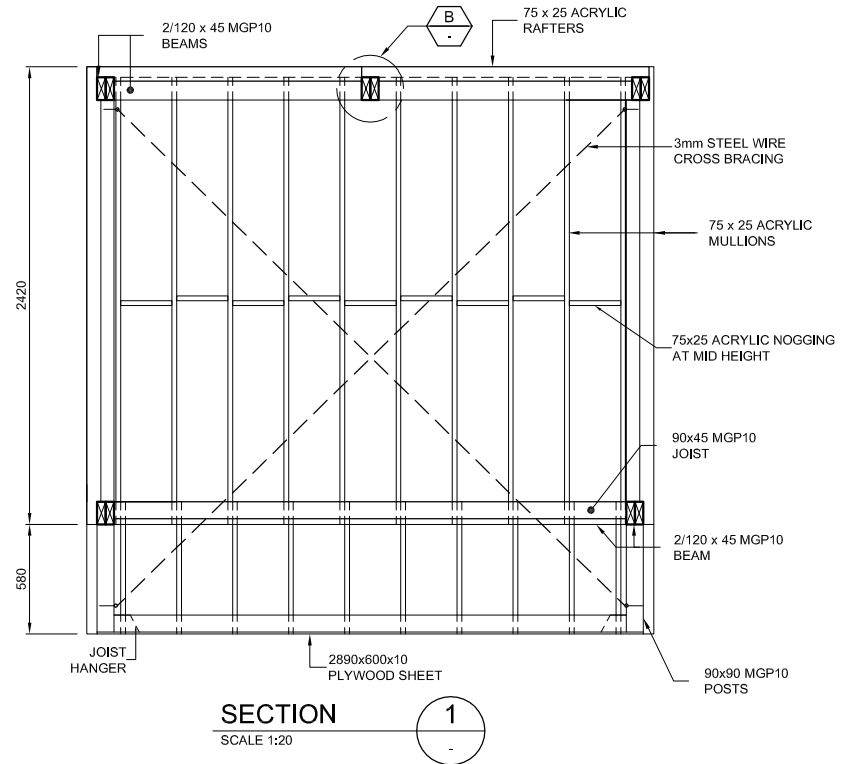


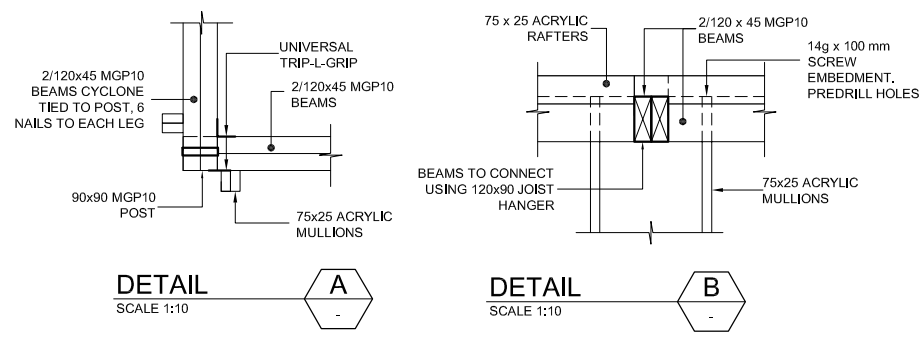
**FLOOR PLAN**  
SCALE 1:20

**RAISED FLOOR PLAN**  
SCALE 1:20

**ROOF PLAN**  
SCALE 1:20

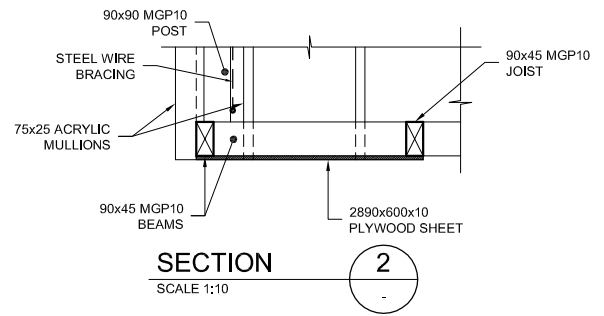


**SECTION 1**  
SCALE 1:20



**DETAIL A**  
SCALE 1:10

**DETAIL B**  
SCALE 1:10



**SECTION 2**  
SCALE 1:10

- NOTES:**
- DO NOT SCALE FROM THIS DRAWING.
  - ALL DIMENSIONS ARE IN MILLIMETRES U.N.O.
  - ALL WORKMANSHIP AND MATERIALS TO BE IN ACCORDANCE WITH AS1720 & AS1684.
  - UNLESS OTHERWISE SHOWN ALL TIMBER SHALL BE FULLY SEASONED.
  - EXTERNALLY EXPOSED TIMBER SHALL BE DURABILITY CLASS 2 OR H3 TREATED.
  - HANDLE AND STORE THE TIMBER SO AS TO NOT OVER STRESS THE MEMBERS AT ANY TIME. STORE TIMBER DELIVERED TO THE SITE HORIZONTALLY, NOT LESS THAN 150mm OFF THE GROUND, EVENLY SUPPORTED, WELL VENTILATED AND PROTECTED FROM THE ELEMENTS.
  - IN ALL BOLTED TIMBER STRUCTURAL JOINTS WHERE STEEL PLATE DOES NOT PROTECT TIMBER, PROVIDE GALVANISED WASHERS AS FOLLOWS:  
MIN DIAMETER FOR

BOLT/SCREW	THICKNESS	FOR ROUND WASHER
M8	2,0	40
M10	2,5	45
M12	3,0	55
M16	4,0	65

REV	DATE	DRN/CHD	DESCRIPTION
1	06.05.2013		CONSTRUCTION ISSUE



Reproduction of the whole or part of this document contributes to the infringement of copyright. The information, ideas & concepts in this document are confidential. The recipient(s) of this document shall be prohibited from disclosing such information, ideas & concepts to any person without prior written consent of the copyright holder.

**KUUKI VIVID ARTWORK**

CONSULTANT  
**built environment collective**  
**< BE • Collective >**  
 engineered design  
 structural | civil | hydraulic | ESD  
 9 Hynes St, Fortitude Valley, Qld. 4006  
 tel.: +61 (07) 3252 1001, www.bccollective.net

**STRUCTURAL DOCUMENTATION**

PLANS, SECTIONS AND DETAILS

DRAWN	ENGINEER	REVISION
R.M.	R.K.	
CHECKED	DATE	
R.K.	APRIL 2013	
DRAWING SCALE		
A.S. @ A1		
PROJECT NO.	DRAWING NO.	REVISION
6336	S100	1