



**Built Environment Collective (BEC)** continues to support Local Councils throughout **Queensland, New South Wales & Victoria**.

The Built Environment Collective [\(BEC\)](#) local knowledge, regional presence & experienced staff deliver high quality engineering & project management solutions. BEC Offers the following services:

- |                           |                           |                        |
|---------------------------|---------------------------|------------------------|
| ◆ Onsite Data Collection  | ◆ Flood damage assistance | ◆ Financial Management |
| ◆ Road Condition Report   | ◆ Funding Application     | ◆ Design & Compliance  |
| ◆ Project Superintendency | ◆ Council representation  | ◆ Project Management   |

## Funding for Councils

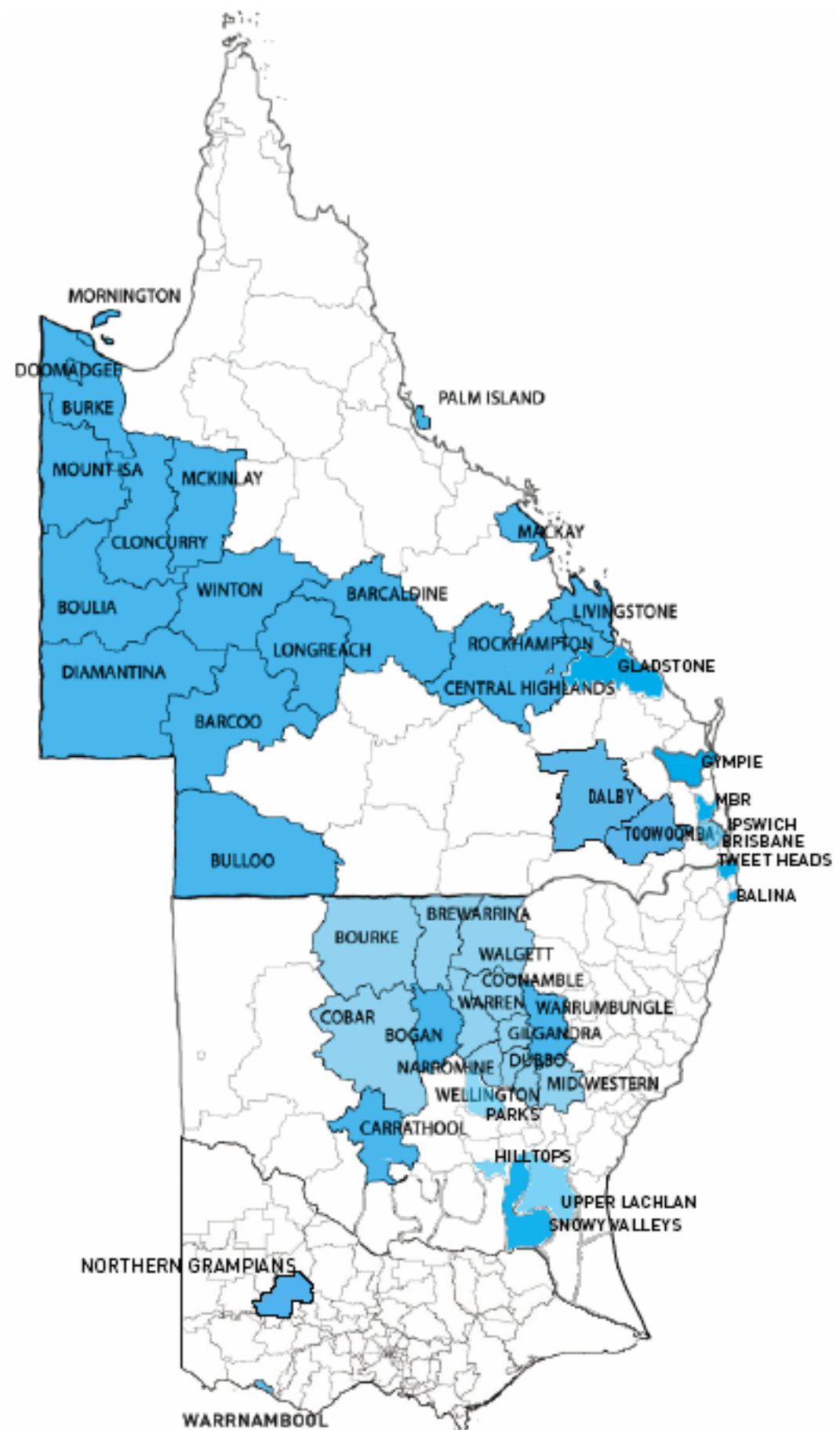
The Prime Minister, Deputy Prime Minister, and Minister for Local State Government have pledged further disaster recovery contributions to support local communities. Councils have experienced significant revenue losses due to the COVID-19 pandemic along with the impacts and costs associated with complying to national public health directions.

This program delivers a much needed stimulus during these increasingly trying times. Projects are expected to begin soon and create a significant number of new jobs across various sectors. Queensland councils are set to receive over \$101 million to build community infrastructure (under the \$500 million Local Road & Community Infrastructure Program).

Like Queensland, New South Wales Councils will also benefit from the Local Road and Community Infrastructure Program, with a \$150 million stimulus. This is on top of Federal funding for various local road & road safety upgrades.

The NSW Government has pledged \$25 million to local Councils as part of its Fixing Local Roads program, which the Federal Government has since provided addition \$191 million funding as part of its Shovel Ready Project program that serves to accelerate projects that are ready to go.

Local Councils are urged to contact BEC for our services to make the most of these funding initiatives.



**BEC** has collaborated with QLD, NSW & VIC councils to deliver over **\$420 million** in **Disaster Recovery Funding Arrangement (DRFA)**.

## Bushfire Generated Green Waste Clean-up & Processing Program.



Photo Credit: Bushfire funding to remove Green Waste <https://www.dailytelegraph.com.au/>

The [NSW Environment Protection Authority](#) (NSW EPA) has released [~\\$32m in grant funding](#) to support impacted Councils recover from the 2019-2020 bushfires.

The grants aim to assess and manage the clean-up of outstanding green waste generated by the fires, as well as provide opportunities for material reuse, and regional employment.

While grant applications are now closed, those Councils whose applications were successful will be able to use the funds to clear their private and public lands from hazardous fire-damaged trees or stockpiled green waste that currently pose fire risks.

[BEC](#) is in talks with numerous Councils to support their efforts to deliver the program within the nominated deadlines. Given our specialist project management experience, working under the DRFA schemes, BEC has processed roughly [400,000 cubic metres](#) of bushfire related green waste clearing & removal to date.

## SBRC Aerodrome Funding Grant



Photo Credit: South Burnett Regional Council: Project Brief

[South Burnett Regional Council](#) (SBRC) placed a bid under the 'Support for Regional Airports round 2 Program' [Department of Industry](#) Funding Scheme to upgrade one of its three airports, the [Kingaroy Aerodrome Strip](#) with state-of-the-art NBD and Pilot Activated Lighting System. The Kingaroy Aerodrome opened in 1931 and hosts two runways, the 1600m x 30m bitumen sealed main runway and the 1432m grass secondary runway which caters aviation related services such as a major gliding facility,

automatic aircraft refuelling and is located only 4km South of Kingaroy and 225km North-West of Brisbane.

The report prepared by BEC's [Civil Engineering](#) & [Project Management](#) teams was well received by the South Burnett Regional Council and Federal Government's department of Industry, administering the funding scheme. The project was successful in attaining nearly \$200k in funding for the Civil and Electrical Engineering runway refurbishment works.

Our experienced team has a track record of winning government grants & tenders and are available to support your Council.

## Snowy Valley Council DRFA

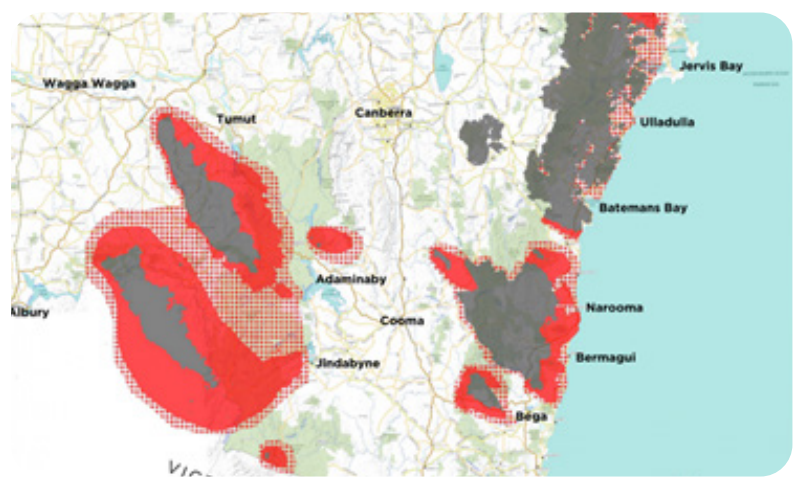


Photo Credit: NSW Rural Fire Service <https://www.rfs.nsw.gov.au/>

In correspondence with Council's initiative to restore infrastructure and damaged natural habitats from the 2019 Bushfires and 2020 Floods, [BEC](#) has collaborated with regional QLD, NSW and VIC councils and to improve [DRFA](#) project related acquisitions & funding outcomes.

As well as being contractors of the [Snowy Valley Council](#), BEC did ongoing work from January through to September of 2021, which was inclusive of the approx \$15 million DRFA approved works in the council's affected regions. BEC is currently working on the Snowy Valley green waste EPA project.

Our team's experienced knowledge of the DRFA determination, eligibility and programme management as well as long history assisting councils means BEC are ideal to help you with future events.

Our team liaised with [NSW Transport](#) to provide claim and funding documentation to execute numerous types of Emergency Works (EW) and Immediate Reconstruction Works (IRW) required to help restore the affected Snowy Valley Council regions.

Visit our [website](#) or [contact us](#) directly to chat with our experienced team and find out more.



## Carrathool Bridge Upgrade



Photo Credit: Carrathool Shire Council <https://www.carrathool.nsw.gov.au/>

[BEC](#) are pleased to support the [Carrathool Shire Council](#) with the realisation of the new Jacksons Bridge in Hillston, NSW. Our involvement originated in early 2020 with the production of engineering reporting, including concept designs and preliminary cost estimates in support of funding.

The contractor [Murray Constructions](#), is using a cambered vibrating screed to form & compact the deck surface. The vibrators are placed at equal distance along the screed rail. The screed is winched along tracks, traveling behind the pumping & placement station. Placement for the 37m long bridge deck took just 4-hours, with only minor hand finishing required. The bridge opened for public use on 21st December 2021.

## Hercules Park, Hamilton



Photo Credit: BEC Drone footage

[BEC](#) was engaged to provide hydraulic design and documentation services for Northshore Hamilton's new [Hercules Street Park project](#). The \$10 Million makeover took under 12 months to complete & opened in January 2020.

Two years on, the park has grown into a lush greenspace for the surrounding community and won the 2020 '[Good Design Award](#)' – for Urban Architecture. Designed by [Turf Design Studio](#) & [Environmental Partnership](#) and in collaboration with [Owen Architects](#), this is the largest QLD

waterfront urban renewal project with a smart water play area, BBQ areas, off leash dog park and multicourt play area for exercise & leisure activities.

Our scope included hydraulic services ranging from internal water and sewer reticulation to comprehensive amenities for a new Café area, including a grease arrestor. We also designed hydraulic services to water fountains and BBQ areas and provided coordination with landscape and civil teams.

## DRFA Projects | BEC



Photo Credit: Courtesy of Visit Victoria [https://www.vic.gov.au/sites/default/files/2021-04/BRV\\_Statewide%20Recovery%20Plan.pdf](https://www.vic.gov.au/sites/default/files/2021-04/BRV_Statewide%20Recovery%20Plan.pdf)

Disaster Recovery Funding Arrangements (DRFA) may be activated following an eligible disaster to provide assistance to impacted community members, small businesses, not-for-profit organisations, primary producers, local governments and state government agencies.

[BEC's Disaster Capabilities](#) spans across a collective 30 years' experience, which delivers services as listed below:

- ✦ Flood Damage Assessment
- ✦ Funding Application
- ✦ Project Management
- ✦ Road Condition Report
- ✦ Project Superintendency
- ✦ Design & Compliance
- ✦ Data pickup & onsite coordination of Council resources
- ✦ Council Representation
- ✦ Financial Management

Visit our [website](#) or [contact us](#) directly to chat with our experienced team and find out more.



Council has been extremely pleased with BEC's support in preparing for, submitting, and delivering DRFA works to date. The experienced, available, and hard working staff know the scheme back-to-front, and have saved us major headaches while securing millions of dollars in funding.



**Paul Farrell**  
Director | Carrathool Shire Council

We have team members based across QLD, NSW & VIC to ensure the rapid deployment to impacted areas. We are passionate about supporting local Councils, and are experienced at working remotely.

**BEC has assisted Councils for multiple events including DRFA:**

- ❖ Snowy Valley Storms: 3 Feb 2021 onwards
- ❖ NSW Storms & Floods: 10 March 2021 onwards
- ❖ Western NSW Floods: From 26 Feb 2020
- ❖ NSW Storms & Floods: From 15 Jan 2020
- ❖ Carrathool Floods: 22 April 2019
- ❖ Cape York QLD Trough: 26 Jan - 2 Feb 2018
- ❖ NSW Sir Ivan Fire: 14 Feb 2017
- ❖ Gulf Tropical Low: 15 - 24 Feb 2017
- ❖ Central Western QLD Flood: 13 - 19 June 2016
- ❖ Central QLD Severe Weather: 15 - 20 July 2016
- ❖ Central NSW Storms & Floods: 30 Aug 2016
- ❖ Tropical Cyclone Dylan: Jan 2014
- ❖ Tropical Cyclone Gillian: March 2014
- ❖ Tropical Cyclone Oswald & Associated Rainfall & Flooding: Jan 2013

Our team has worked with and for Local Government, giving us an unparalleled understanding of the opportunities and challenges faced by Council.

Our DRFA management teams are supported by BEC's award-winning engineering design consultancy, based in our Brisbane Head Office. This allows site teams to be supported by timely and professional design and contract administration support.



The [BEC](#) team are eager to meet with you & your Council to discuss how we can assist; by providing multi-discipline engineering consultancy, project management, contract admin, or tailored data-capture, asset management, and disaster recovery services.



I have no hesitation in recommending BEC, following their teams professional and hand-in-hand approach in supporting Gilgandra to achieve approval of the highest dollar value remediation works in the councils history.



**David Neeves**  
CEO | Gilgandra Shire Council

## BEC NEWS



**BEC Welcomes New Associate Director**

David Halpin

David draws on his 35+ years' experience in the built environment sector of site development, design development, construction detailing, consultant team leader and project management to lead the various expanded disciplines as a united team.

He has a proven track record as lead consultant on various projects and enjoys guiding complex projects to smooth conclusion. David also has an excellent eye for realising value management potential and prides himself on his strong relationship with his clients and other consultants.

Feel free to call David to discuss existing or new projects on 0422 393 367 or [DavidH@bec.studio](mailto:DavidH@bec.studio)

### Contact [us](#)

Email: [localgov@bec.studio](mailto:localgov@bec.studio)  
Brisbane: 07 3252 1001  
Sydney: 02 9332 5100  
Perth: 08 9321 0159